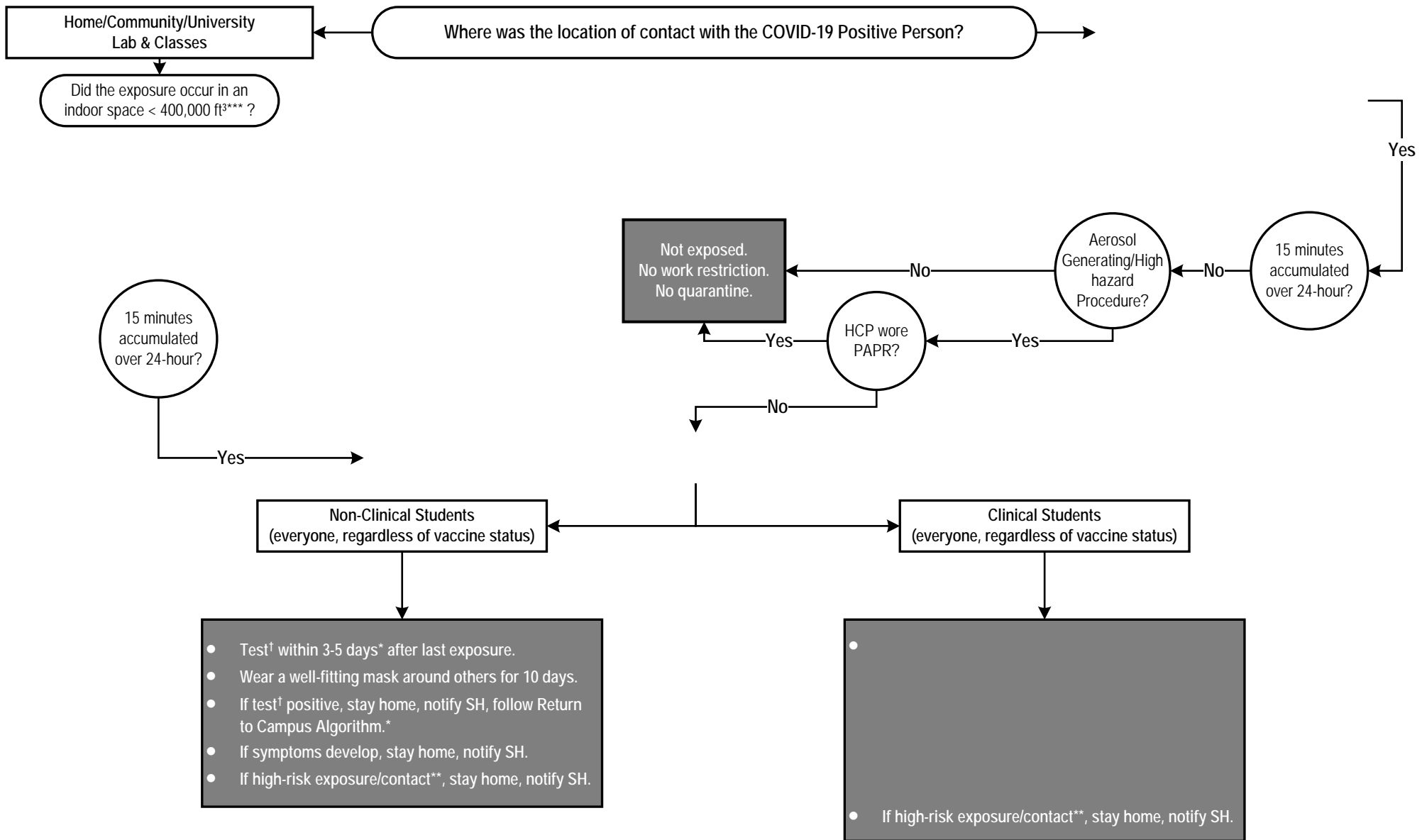


# EXPOSURE/QUARANTINE GUIDANCE (FOR ALL STUDENTS) DECEMBER 5, 2022 (vs. 8.1)



† Either an antigen test or nucleic acid amplification test (NAAT), PCR can be used

\*Students infected with SARS-CoV-2 within the last 30 days do not need to test unless symptomatic

\*\* High-risk exposures may be deemed higher risk for transmission, such as with an intimate partner, in a household with longer periods of exposure, or while performing unmasked activities with increased exertion and/or voice projection or during prolonged close face-face contact

High risk contact is someone who: 1.) May experience severe illness if they become infected with COVID-19; 2.) May be more likely to transmit the virus to those who are at higher risk for severe COVID-19; or 3.) has higher transmission potential

\*\*\*Most indoor spaces on campus are <400,000 ft<sup>3</sup> with the exception of open floor plans & warehouses. Please ask Student Health if you have questions regarding the size of your location.