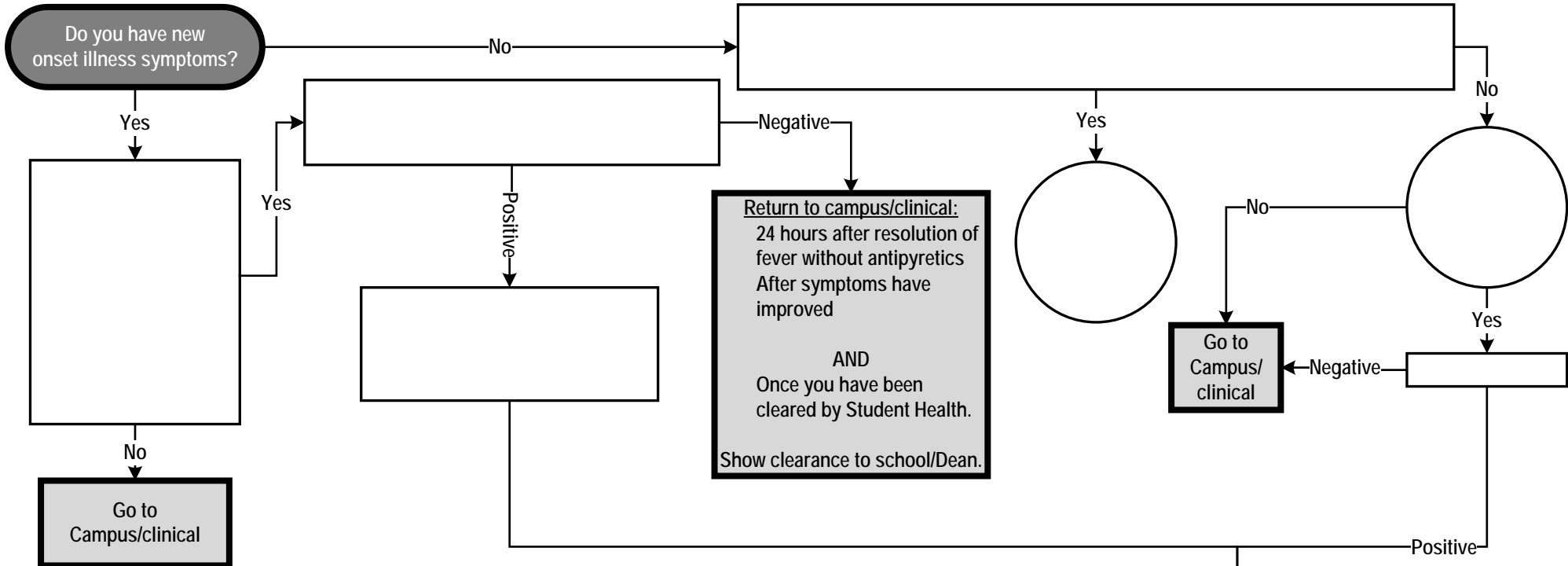


CLINICAL STUDENTS

LLU STUDENT RETURN-TO-CAMPUS/CLINICAL CRITERIA (ALL SITES) – UPDATED JANUARY 2024 (vs. 5)

SYMPTOMS, EXPOSURES, & TESTING



Return to clinical †:

10 days from onset of symptoms (or date of positive test if asymptomatic) without retesting
 5 days from onset of symptoms with negative test (taken on same day or within 24 hours prior to return), if test still positive, complete 10-day isolation
 If ****severe/critical illness or severely immunocompromised isolate 20 days from onset of symptoms OR (2) SARS-COV-2 tests collected >=24 hours apart*****
 24 hours after resolution of fever without antipyretics
 After symptoms have improved
 AND
 Once you have been cleared by SH.
 Show clearance to school/Dean.